



Smart power conversion for the energy revolution!
Ideal solution for C&I, AC & DC microgrids or electric vehicles, among others.

Innovative technology:

Stabiliti 30C3-CE is an innovative multiport power converter with **3 bidirectional ports** (AC/DC/DC) to easily interconnect **power sources** (grid, PV and storage unit) and **loads** (AC or DC). Using a single multiport converter offers much easier systems **integration, control** and ongoing **maintenance** by simplifying system level hardware and software design. The enclosure is **IP54** and can therefore be installed **indoor** or **outdoor**.

Battery life is **extended** through **galvanic isolation** (protection against grid disturbances) and built-in smart **algorithms** to minimize battery stress. The wide DC voltage range allows the use of **multiple storage** technologies such as lead-acid, lithium-ion, super-caps, aqueous batteries, flow batteries or flywheels. The galvanic isolation also maximizes **PV production** over the long-term, by reducing PID (Potential-Induced Degradation).

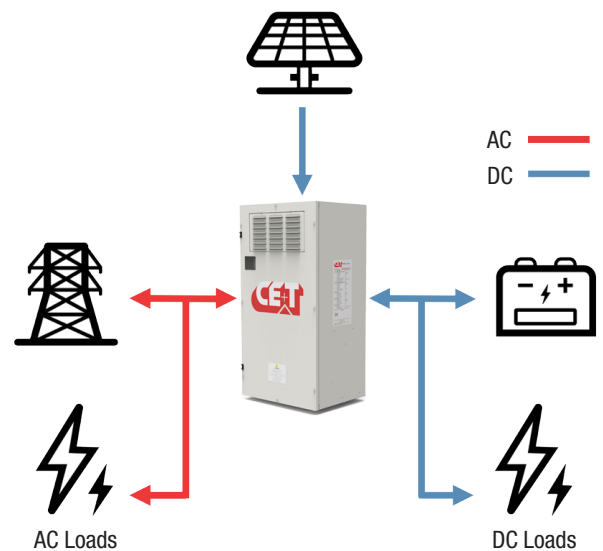
Applications:

The Stabiliti 30C3-CE can be used for energy management applications for:

- **Commercial and Industrial (C&I):**
 - Increase **self-consumption** of **renewable** energy
 - Minimize demand costs by **peak shaving**
 - **Be paid** for **grid support** (re-injection and demand response)
 - **Backup power** for **AC & DC loads**
- **Microgrids:**
 - **Same advantages** as C&I solution but for **several consumers**
 - **Grid interactive** or completely **off-grid**
 - **Save fuel** for generators (Solar + Storage microgrid)
- **Electric vehicles:**
 - Integrate **renewable** energy, **energy storage** with **fast chargers**
 - **Reduce** energy costs and demand costs (via renewable and increased self-consumption)
 - **Supports Vehicle-to-Grid** “V2G” applications

Stabiliti 30C3-CE

3 ports (AC/DC/DC)



Building blocks:

- Stabiliti is a **30 kW modular power converter** that can be used to design systems in any size
- Capable of off-grid operation (**tested up to 240 kW**)

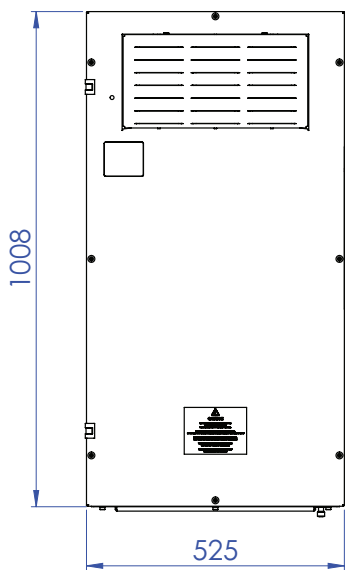
Illustrations are non-binding and may include customized fittings.

Stabiliti 30C3-CE

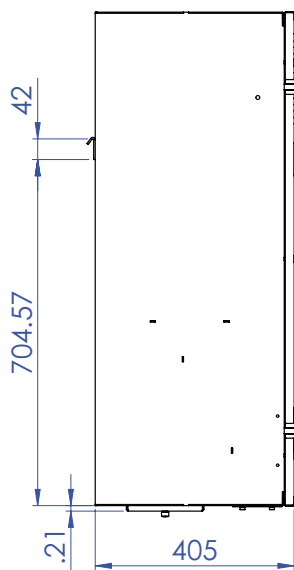
Model	Stabiliti 30C3-CE
General	
Part Number	T831890201
Size (W x H x D)	20.5" x 40" x 16" / 520 x 1016 x 406 mm
Weight	141 lbs / 64 kg
Enclosure protection	NEMA-3R / Ingress Protection IP54 (powder-coated aluminum)
Mounting	Wall mount (vertical)
Wiring	Hinged access panel
Isolation between AC and DC ports	Galvanic isolation (AC to DC)
International Certifications (Pending)	Grid interactive certifications: EN50549, C10/11 (EN50549/VDE-AR-4105)
Compliances	CE, RoHS and Reach
AC Grid Interactive	
Maximum Output power AC1 port	30 kW*
Nominal current (maximum)	50 Hz: 39 A (44A rms per phase)
Nominal output voltage	3 x 400 Vac to 3 x 480 Vac*
Nominal output frequency (range)	50 Hz (45 to 55 Hz)
Power factor (programmable range)	> 0.99 at rated output power (0.75 leading to 0.75 lagging)
Reactive power range (programmable)	+21 kVAR to -21 kVAR
Conversion efficiency (CEC*)	95.5% (95%)
Current harmonics	< 5% THD
Grid protection	Integrated AC disconnect
Microgrid features	Voltage forming and load following
Microgrid black start	Integrated
Output power DC2 port	
Output power	Max 45 kW to DC3 port and 30 kW to AC1 port
Output current	60 A
Output voltage range	100 to 1000 Vdc (derating below 500 Vdc)
Open-circuit voltage (Voc)	1000 Vdc
DC Filter	Integrated differential choke
DC Disconnect	External
Wiring configurations	+ or - ground referenced mono-polar, bipolar or floating
GFDI protection	1 A: fused
DC Bus/DC3 port	
Output power	Max. 45 kW DC3 to DC2 and 30 kW DC3 to AC1 port
Output current	60 A
Output voltage range	100 to 1000 Vdc (derating below 500 Vdc)
Open-circuit voltage (Voc)	1000 Vdc
DC Filter	Integrated differential choke
DC Disconnect	External
Wiring configurations	+ or - ground referenced monopolar, bipolar or floating
GFDI protection	1 A: fused
Monitoring and control	
Available control methods	AC1 port: Idle, Net, Grid Following, Grid Forming DC2 & DC3 port: Battery current, power, Voltage, MPPT
Monitoring / Control interfaces	RS-485 Modbus RTU - 2W / Modbus TCP over Ethernet
Fault logging	Saves all operating data when a fault occurs
Firmware updates	Remote via Telnet and FTP
Environmental	
Transient overvoltage protection	AC and DC MOVs at AC & DC input terminal
Operating temperature	-25 to 60°C (derating starting at 50°C)
Storage temperature	-40 to 85°C
Relative humidity	0 to 100% (non-condensing)
Cooling	Forced air (with variable speed fan)

* 30 kW at 3 x 400 Vac require an autotransformer 3 x 480 to 3 x 400 Vac.

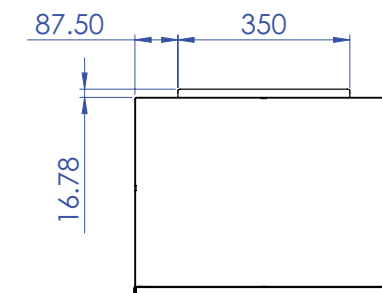
Stabiliti System - Dimensions



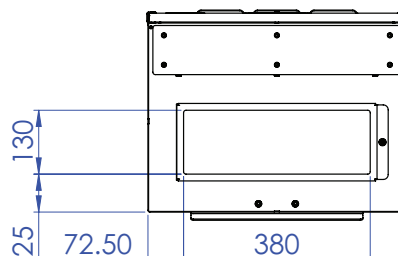
Front View



Left View



Top View



Bottom View

Stabiliti 30C3-CE - Datasheet - v1.1 Specifications can change without notice. New data will be updated on our website: www.cet-power.com.
The present equipment is protected by several international patents, trademarks and copyrights.